

Digital Video Interfacing Products

## AT240IP

### TS-over-IP

MPEG2 TS Player, Recorder & Converter  
4 independent DVB-ASI Inputs / Outputs  
DVB-IP Transmitter & Receiver  
Tunnelling of ASI signals over LAN, WAN or the Internet

Pro-MPEG Code Of Practice #3(COP3) FEC



## Standard Features

Full Duplex **DVB-ASI Player/Recorder & DVB-ASI to IP & IP to DVB-ASI Converter.**

- **Two Versions :**

**Version 1 :**

2x DVB-ASI inputs, 2x DVB-ASI outputs & GigE IP input/output.

**Version 2 :**

4x DVB-ASI inputs & One GigE IP input/output.

- Converts HD and SD MPEG-2 or H.264/MPEG-4 AVC transport streams from DVB-ASI to IP in real time.
- Receives HD and SD MPEG-2 or H.264/ MPEG-4 AVC transport streams over Ethernet-based Internet Protocol (IP) networks and converts them to DVB-ASI.
- **Web based Software** as well as **DVSStationIP.**
- **DVSStationIP** runs on **Windows XP, Vista, Windows 7.**
- Supports DVB According to Standard **EN50083-9.**
- Supports 188 & 204 byte or Arbitrary Packet Sizes.
- Remote Web-based configuration management and remote firmware upgrade.
- Saved configuration setting. No re-configuration needed after system reboot.
- An alternative to dedicated satellite links – connects digital video equipment to computer networks.

### IP

- On the transmit side, encapsulation of the TS data for Ethernet uses IP and the **User Datagram Protocol (UDP)**, with **Real-time Transport Protocol (RTP)** encapsulation and Pro-MPEG **Code Of Practice #3(COP3) forward error correction (FEC)** as an option. Dedicated hardware performs the encapsulation, which maximizes the throughput and minimizes latency.
- On the receive side, the device can accept traffic from Ethernet network and recover TS data. For RTP encapsulated data, the device includes a receive buffer to absorb network jitter and correct for packet reordering and packet duplication. COP3 FEC-based lost packet recovery is available.
- For multiple TS interfaces, the AT240IP individually maps each one to a specific UDP/IP socket (a combination of IP address and UDP port). All other encapsulation parameters can also be individually configured per TS.

## Application

Targeted for Digital Video Professionals, Sophisticated End Users and OEMs the AT240IP is an ideal solution for a number of applications such as:

- Development Tools.
- **DVB to IP Gateway.**
- Universal Interface for Digital Video or MPEG-II Transport Stream Recording, Playing and Processing.
- **Video on Demand Server.**
- Transport Stream Test Generator.
- **Studio to Transmitter Links.**
- ENG (Electronic News Gathering) Stream content to and from remote locations.
- ASI input to Cable System.
- **Distance education/Corporate training.**
- Converting ASI out from encoders to IP, or from an IP source to devices such as decoders, Multiplexers, Modulators.

- IP Maximum rate of up to 214 Mbps per ASI channel.
- Network jitter correction.
- Supports constant bit rate ASI output.
- IP address assignment from DHCP server & static IP.
- IP address also configurable through the web interface.
- Configuration for Time To Live (TTL) for Multicast.

#### Input

- Automatic Cable Equalization of up to 350m.
- Supports True or Inverted ASI signals.
- Carrier and Lock Detection.
- Sync, Error & Code Violation Detection.
- Supports both multi-program TS (MPTS) & single-program TS (SPTS) data.

#### Output

- Programmable Output Bit Rate.
- Can play Higher Bitrate than the TS file.
- Null packet insertion by Hardware.
- PCR, continuity counter correction.
- Packet time and date correction.

## Specifications

### DVB-IP

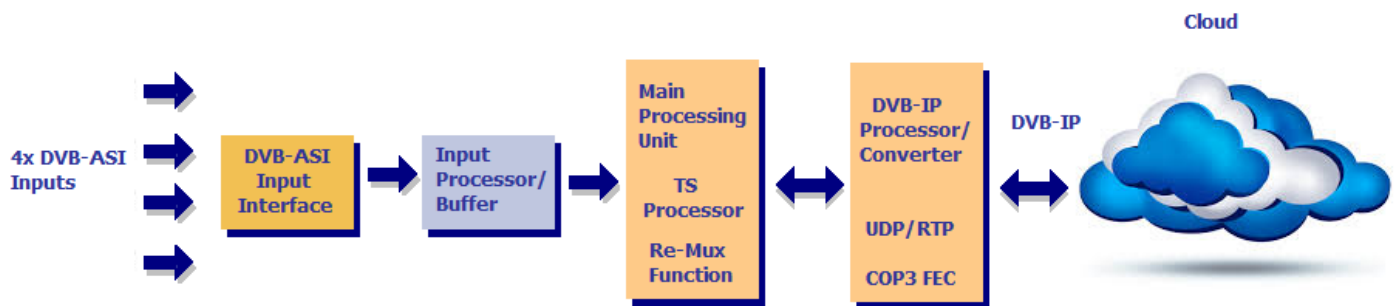
- **Ethernet encapsulation:** IEEE 802.2 SNAP, Eth.
- **Encapsulation:** UDP or RTP
- **IP support:** IPv4
- **IP-address assignment:** DHCP, link local or static
- **Multicast support:** IGMPv2
- **Date Rate:** 100/1000
- **GigE port Physical layer:** IEEE 802.3a
- **GigE port Connector:** RJ-45 with LEDs
- **FEC:** Pro-MPEG Code Of Practice #3(COP3)
- **TS to IP latency:** Less than 1ms
- **Jitter tolerance range:** 1 .. 500ms

### DVB-ASI

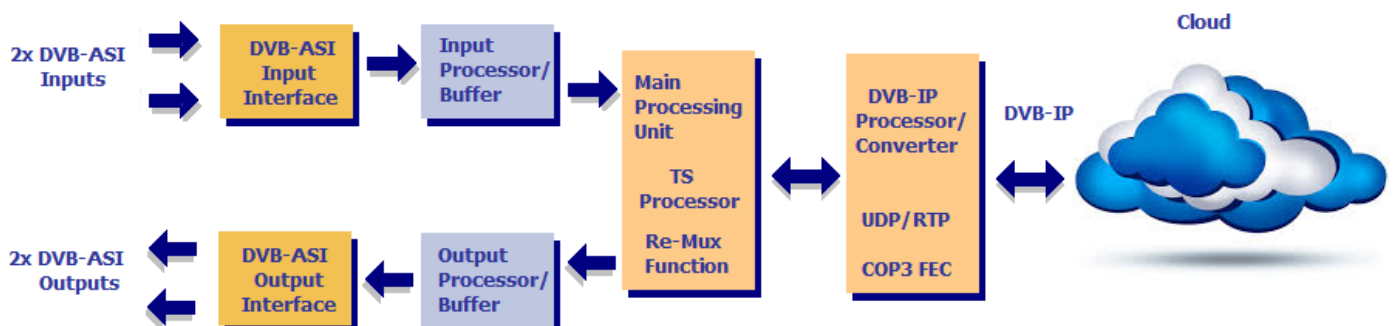
- **DVB-ASI port Physical layer:** EN50083-9
- **DVB-ASI Connector:** 75 Ohms Mini BNC
- **Input Return Loss:** >15 dB.
- **Input Signal level:** 800 mV +/- 10%
- **Output Signal level:** 1.0Vp-p nominal.
- **DVB-ASI Input/Output Bit Rate:** 0 to 214 Mbit/s.
- **DVB-ASI Output Clock:** 270 MHz.

## 1 BLOCK DIAGRAM

The block diagram of the AT240IP device.



### AT240IP – Version 1- 4x ASI inputs



### AT240IP – Version 2- 2x ASI inputs & 2x ASI outputs

## 2 EXTERNAL INTERFACES

The external interfaces for the AT240IP are shown. There are four Mini BNC connectors for the DVB-ASI inputs/outputs, a RJ45 connector with two LEDs, a Power Supply Inlet and a Power Switch.

Only the power adaptor supplied by Alitronika with this device should be used. These power supplies are carefully selected for output voltage, current & power ratings as well as noise level. Using any other power supplies will affect the performance of the device for sure and may damage the device's internal components permanently which is not covered by the warranty.

The three LEDs in front of the unit function as follows:

### Top LED - Power

**ON** = Power is on

**OFF** = Power is off, No power

### Middle LED - Status1

**OFF** = After power up this LED should be Blinking, if not something is wrong!

**ON** = When the device has connected correctly with the IP Network.

### Bottom LED - Status2

**OFF** = This LED is off after power up

**ON** = When the device has SYNC to any incoming and/or out going TS.



### 3 INSTALLATION

The AT240IP device operates in a stand-alone mode. RF input & IP parameters are set using the Remote Web-based configuration management application. As such there are no need for any other application software. However DVStationIP, the IP version of Alitronika's DVStation3/4/IP application software is provided FREE of charge with these devices. Please follow these steps for problem free operation of the device.

#### Step 1: Application Software

Download the application software, DVStationIP, from our website.

Link : [www.alitronika.com/downloads.htm](http://www.alitronika.com/downloads.htm)

Unzip it & install it on a PC/Laptop.

#### Step 2: Starting for the first Time

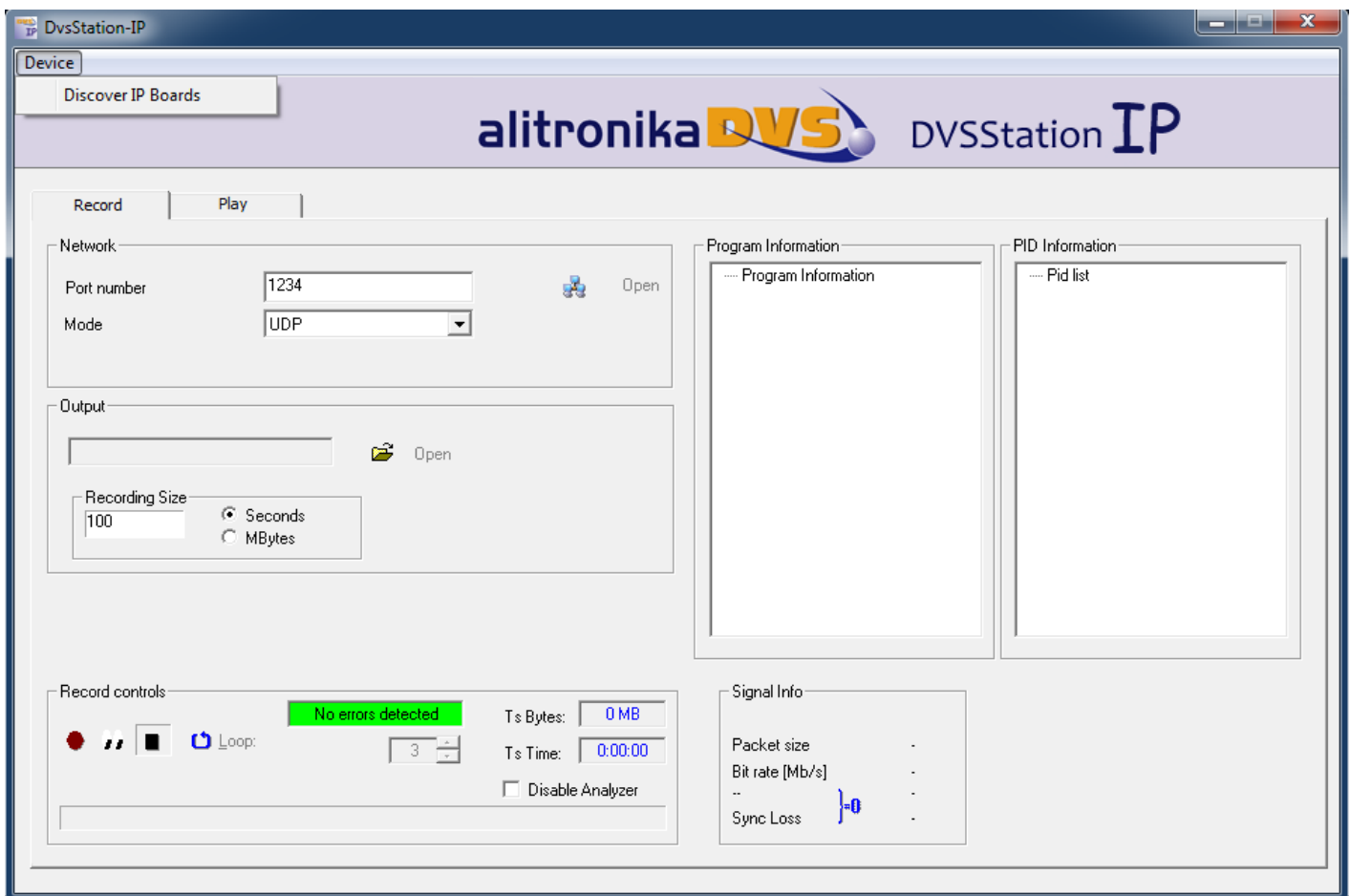
Connect the AT240IP & the PC/laptop to your network **DHCP** server.

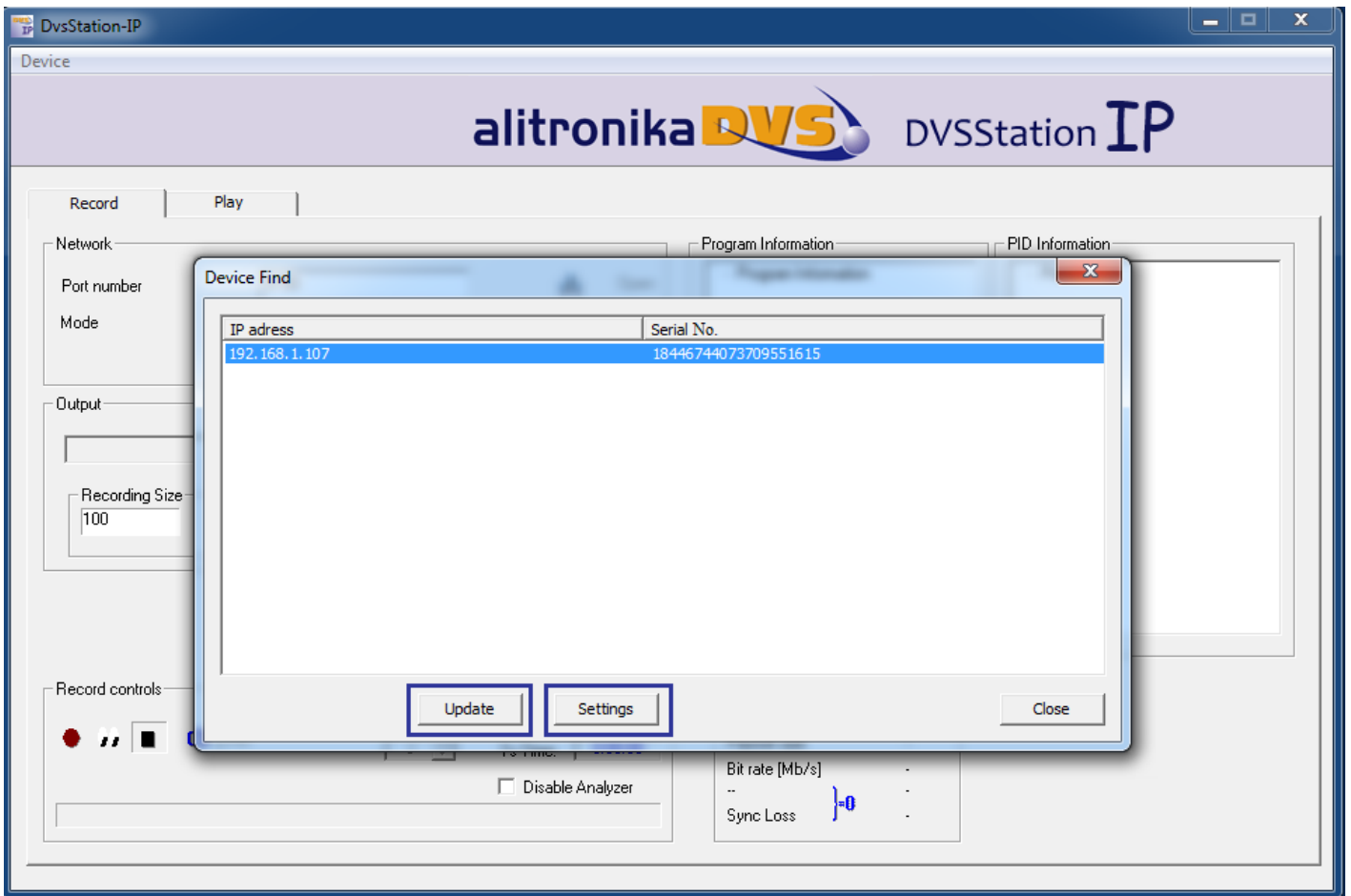
Connect the power adaptor & Power up the AT240IP using the switch on the rear of the unit.

You should see the Power LED is ON and the 2nd LED, Status1, is BLINKING.

Start DVStationIP.

From the top bar, **Device**, use "**Discover**" in order to find the IP address of AT60IP.





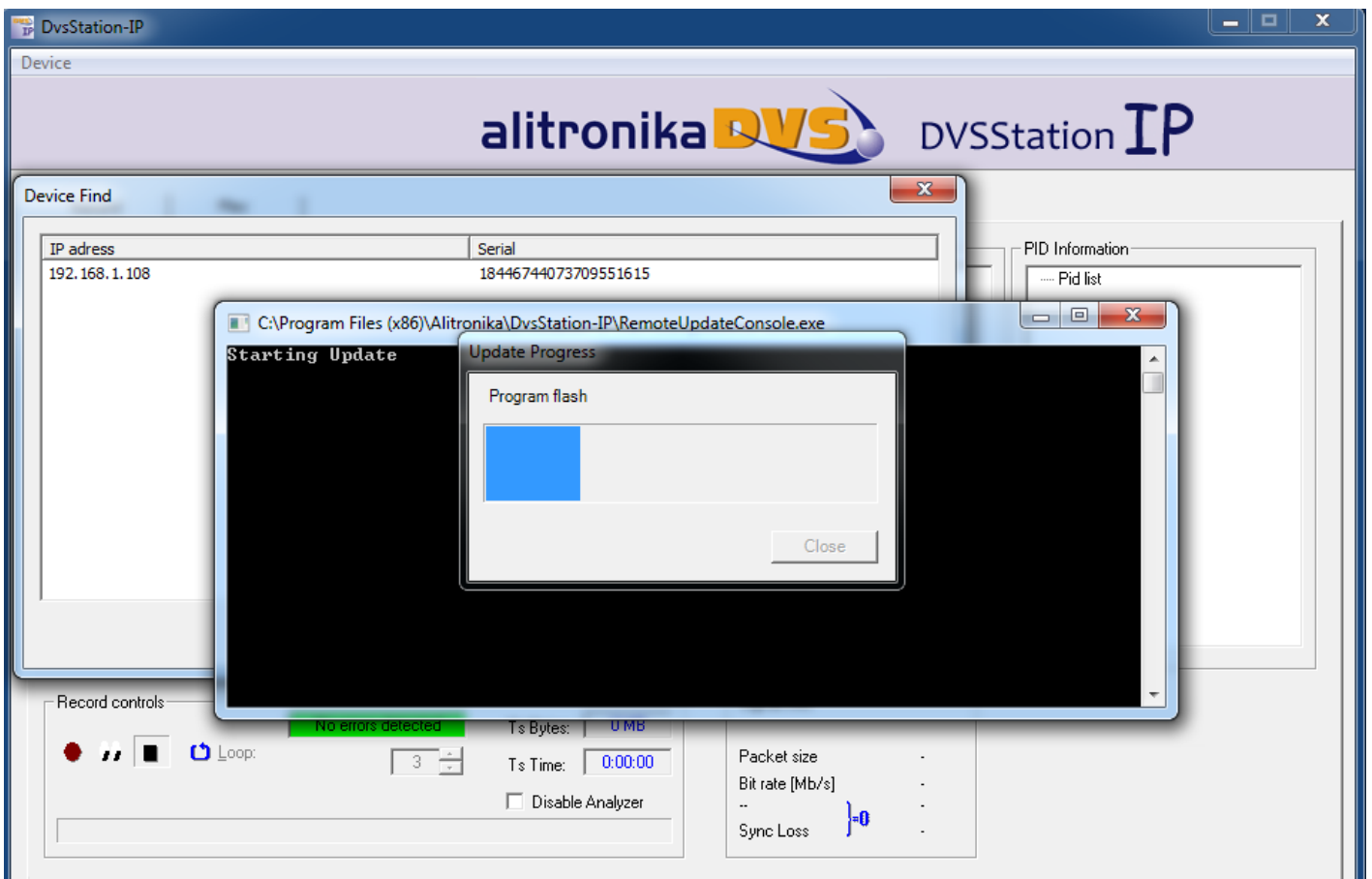
### Step 3: Updating the Firmware if needed

As shown on the screen shots, you should be able to see the IP address of the device as well as the serial number.

**Update** - Clicking on this would update the firmware of the AT240IP device.

You need not do this unless you really need an update. If your system is working OK just leave it.

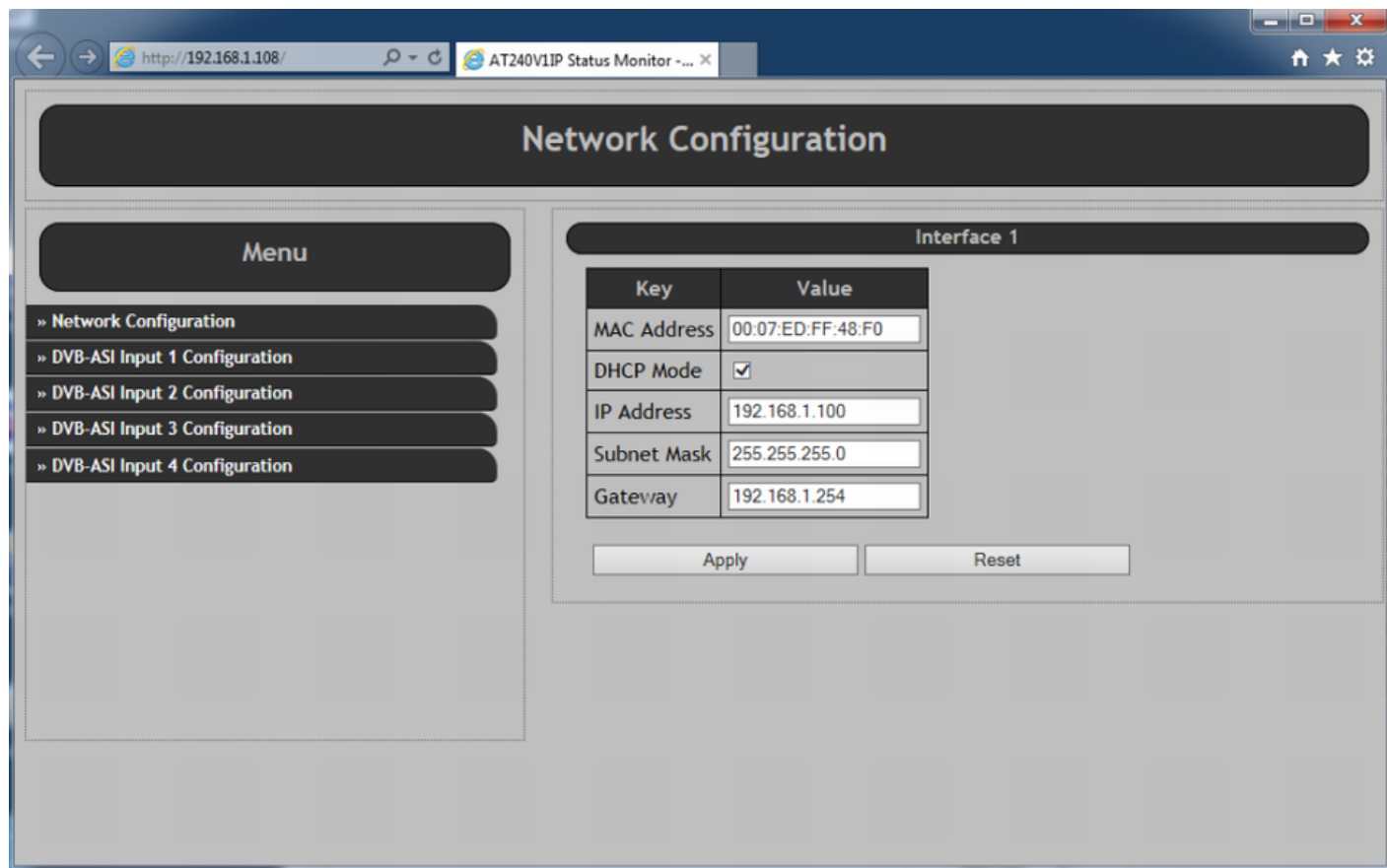
If you do update the firmware you must wait for the **process to complete without any interruptions** for example, disconnecting the device from the network, powering it down. If the updating is interrupted the device will no longer have a valid firmware & no longer operates.



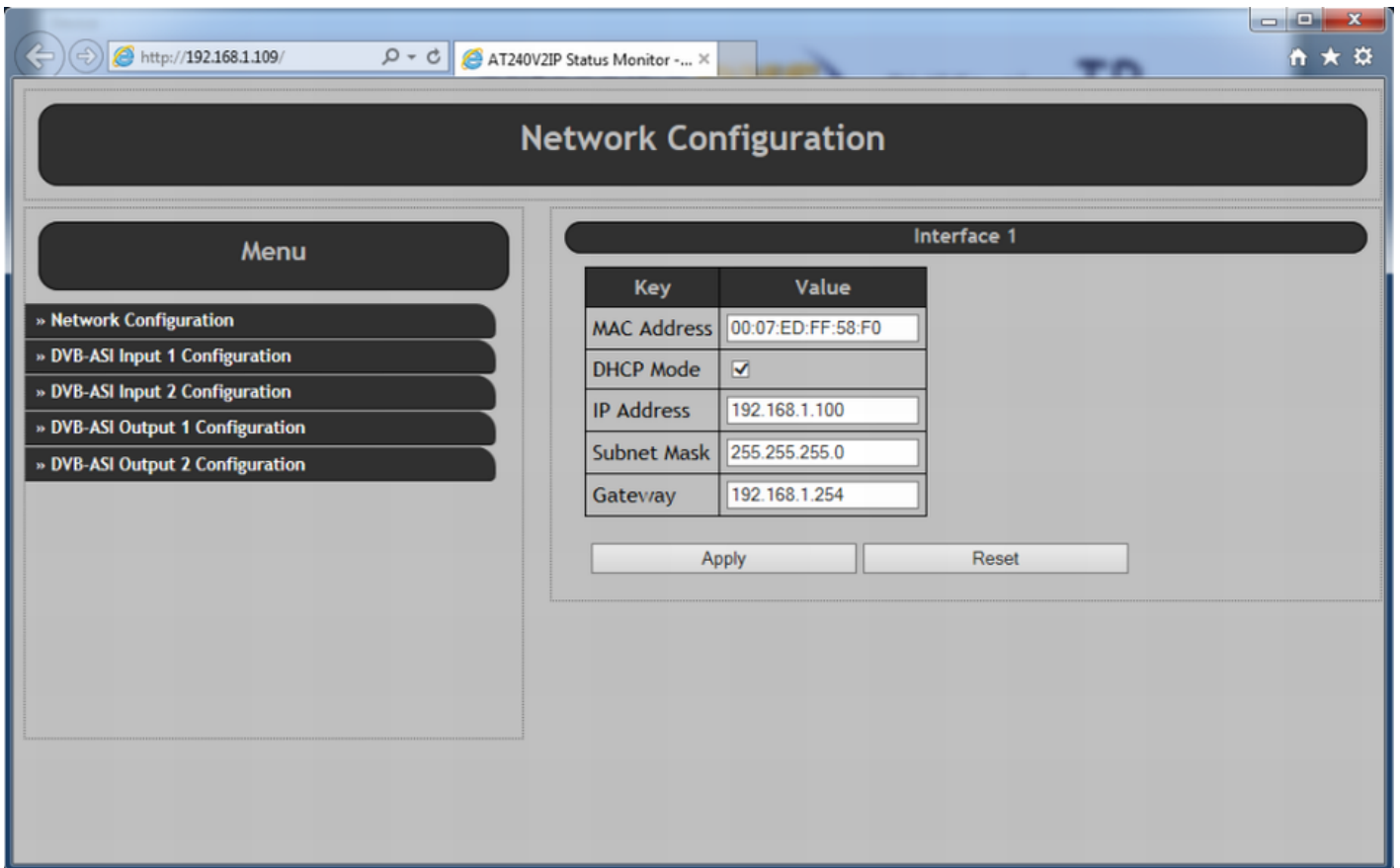
**Settings** - Clicking on this would start the Remote Web-based configuration management application on your web browser. Notice you could do this manually if you know the IP address by just typing this line on your web browser.

#### Step 4: Remote Web-based configuration management application

Once the configuration management starts this screen can be seen.



### AT240IP – Version 1- 4x ASI inputs



## AT240IP – Version 2- 2x ASI inputs & 2x ASI outputs

The "Network Configuration" screen is opened by default.  
The MAC Address, IP Address, Subnet Mask & the Gateway address can be seen.  
The user can change any of these & then clicking on "APPLY".  
It is assumed the user is familiar with IP terms.  
The DHCP Mode could be selected/De-selected.

## Step 5: Setting the DVB-ASI input parameters.

As it can be seen from the screen shot below, in order for correct operation of the AT240IP, a few parameters must be set by the user.

**Notice any DVB-ASI input port must first be ENABLED.**

### 1- IP Encapsulation Settings

3.1- **Mode** – RTP or UDP

3.2- **Packet Number** – Transport Packets are converted & send via IP in bursts.

The number of packets per burst could be selected from 1 to 7.

Refer to DVB over IP documents if you wish to know more about this. Also see Appendix1.

### 2- Pro-MPEG FEC Settings

Again it is assumed the user knows about DVB-over-IP.

It is clear when sending Transport Streams over IP ( or anything over IP ), data could get lost or corrupted.

Forward Error Schemes such as Pro-MPEG Code Of Practice #3(COP3) FEC are used to recover the data.

The user has control over the FEC.

FEC adds additional overhead to the data transfer over IP network.

4.1- **Enabling the FEC** – User is able to Enable or Disable the FEC function.

It is matter of trade-off between the speed & quality.

We assume the user knows what is the best here.

4.2- **Number of Columns & Rows ( L & C )** – Refer to DVB over IP for this. Also see Appendix1.

4.3- **Interleaver Mode** - Refer to DVB over IP for this. Also see Appendix1.

3- IP Settings – The DVB-S2/S Transport Streams are Received, De-modulated & after being processed according to all of the user selected settings above, it send to IP address. The user has also control over where the streams are going.

5.1- **Target IP Address** – Select an IP address for unicast or select 255.255.255.255 for Multicast.

5.2- **Target Port** – User can also select the port number.

Notes :

- Click on **Apply** to save the selected settings on the **non-volatile memory** of the AT60IP device.

The device will operate with these parameters until the user changes them.

No re-configuration needed after system reboot.

- All modulation parameters related to DVB-S2/S RF input and the incoming transport streams are detected automatically by the integrated TS Analyser. No user inputs are required.



http://192.168.1.108/ AT240V1IP Status Monitor -... x

## DVB-ASI Input 1 Configuration

### Menu

- » Network Configuration
- » DVB-ASI Input 1 Configuration
- » DVB-ASI Input 2 Configuration
- » DVB-ASI Input 3 Configuration
- » DVB-ASI Input 4 Configuration

Key	Value
<b>Input Settings</b>	
Enable	<input checked="" type="checkbox"/>
<b>IP Encapsulation Settings</b>	
Mode	RTP ▾
Packet Count (1~7)	7
<b>Pro-MPEG FEC Settings</b>	
Enable	<input type="checkbox"/>
L	10
D	10
Column Only	<input type="checkbox"/>
Interleaver mode	ANNEXB ▾
<b>IP Settings</b>	
Target IP address	255.255.255.255
Target IP Port	9150

TS Status	
Carrier Detected	NO
Locked	NO
In Sync	NO
Packet Size	-
TS Bitrate	
DataCnt Locked	-
DataCnt	-
PCR Locked	-
PCR	-
TS Error	
Overflow error	-
Data Errors	-
Sync Errors	-

## AT240IP – Version 1- 4x ASI inputs

http://192.168.1.108/ AT240V2IP Status Monitor -... x

## DVB-ASI Input 1 Configuration

**Menu**

- » Network Configuration
- » DVB-ASI Input 1 Configuration
- » DVB-ASI Input 2 Configuration
- » DVB-ASI Output 1 Configuration
- » DVB-ASI Output 2 Configuration

Key	Value
<b>Input Settings</b>	
Enable	<input checked="" type="checkbox"/>
<b>IP Encapsulation Settings</b>	
Mode	RTP ▾
Packet Count (1~7)	7
<b>Pro-MPEG FEC Settings</b>	
Enable	<input type="checkbox"/>
L	10
D	10
Column Only	<input type="checkbox"/>
Interleaver mode	ANNEXB ▾
<b>IP Settings</b>	
Target IP address	255.255.255.255
Target IP Port	9150

<b>TS Status</b>	
Carrier Detected	NO
Locked	NO
In Sync	NO
Packet Size	-
<b>TS Bitrate</b>	
DataCnt Locked	-
DataCnt	-
PCR Locked	-
PCR	-
<b>TS Error</b>	
Overflow error	-
Data Errors	-
Sync Errors	-

### AT240IP – Version 2- 2x ASI inputs & 2x ASI outputs

## Step 6: Setting the DVB-ASI output parameters.

**Output Enable** - Any DVB-ASI input port must first be ENABLED.

**Remux function** - The Remux function which allows changing the bitrate to a higher bitrate than that of the TS files could also be Enabled by the user. The desired bitrate is entered by the user, the Remux function of the AT240IP would then add the necessary null packets to increase the bitrate.

**Burst size** – Packets are sent as bursts. User can select the number of packets in a burst.

**Encapsulation Mode** – RTP or UDP.

**Source IP port** – User can select the port number for the ASI output.

**IP delay** – The desired delay value is set by the user.

The screenshot shows a web browser window with the URL <http://192.168.1.108/> and the page title "AT240V2IP Status Monitor". The main content area is titled "DVB-ASI Input 1 Configuration". On the left, there is a "Menu" with the following items:

- » Network Configuration
- » DVB-ASI Input 1 Configuration
- » DVB-ASI Input 2 Configuration
- » DVB-ASI Output 1 Configuration
- » DVB-ASI Output 2 Configuration

The main configuration area contains a table with the following settings:

Key	Value
<b>Output Settings</b>	
Enable	<input checked="" type="checkbox"/>
Remux Bitrate Enable	<input type="checkbox"/>
Remux Bitrate	40000000
Burst size	1
<b>IP Encapsulation Settings</b>	
Encapsulator mode	RTP
<b>IP Settings</b>	
Source IP Port	9150
Source IP Delay (ms)	500

Below the configuration table are two buttons: "Apply" and "Reset".

At the bottom, there are three status tables:

TS Status	
Carrier Detected	NO
Locked	NO
In Sync	NO
Packet Size	-

TS Bitrate	
DataCnt Locked	-
DataCnt	-
PCR Locked	-
PCR	-

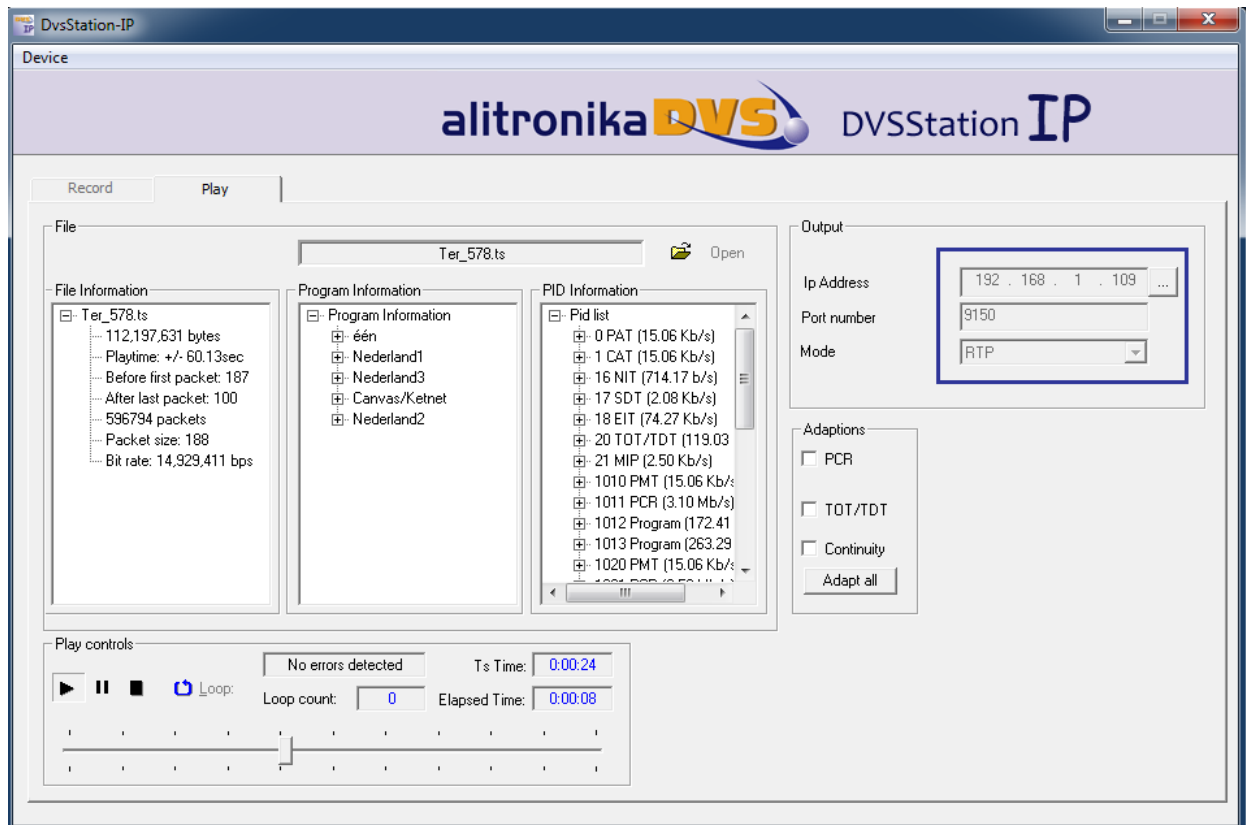
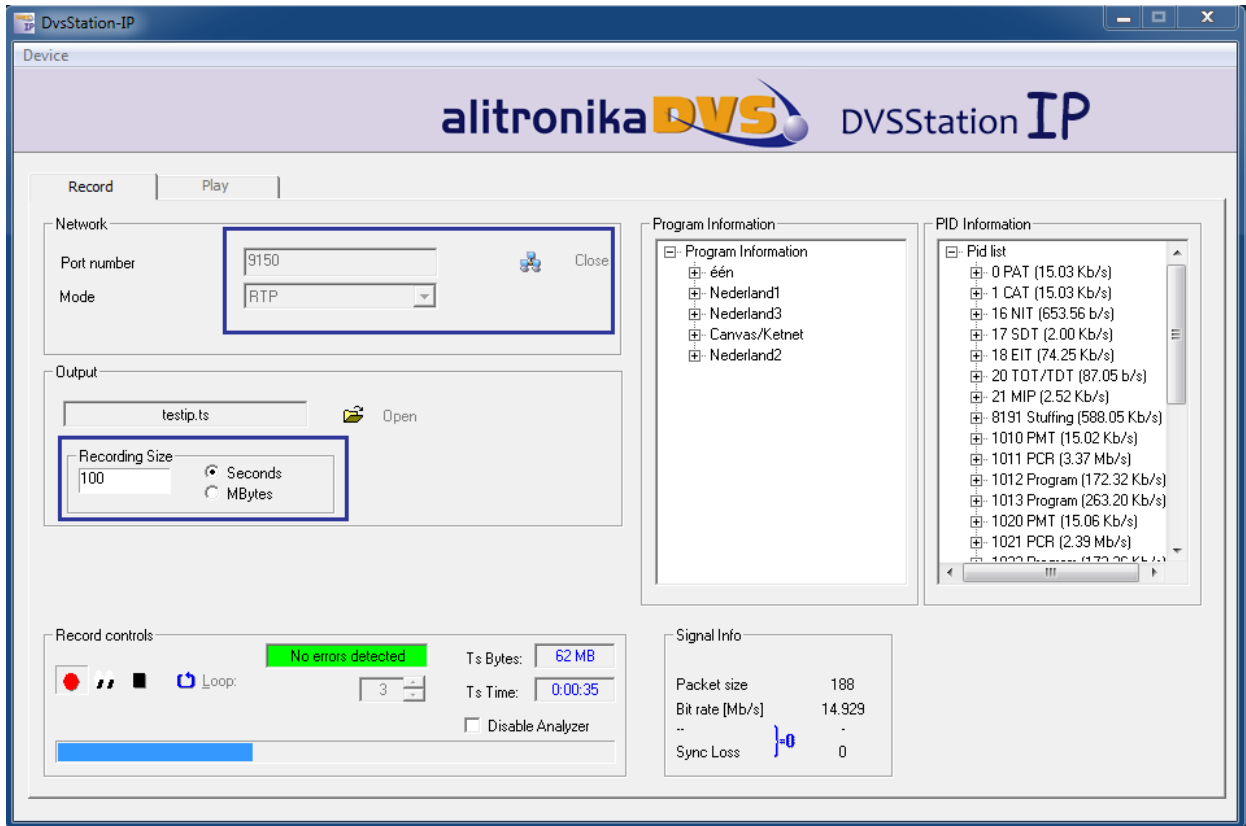
TS Error	
Overflow error	-
Data Errors	-
Sync Errors	-

## AT240IP – Version 2- 2x ASI inputs & 2x ASI outputs

## 4 APPLICATION SOFTWARE

AT240IP operates as a stand-alone device. DVStationIP could be used to add even more functions & features to it.

- 1- Up-dating the firmware
- 2- Finding the device's IP address with "Discover" function when not used with a fixed IP address.
- 3- Recording & monitoring the incoming transport stream.
- 4- Play back any transport streams



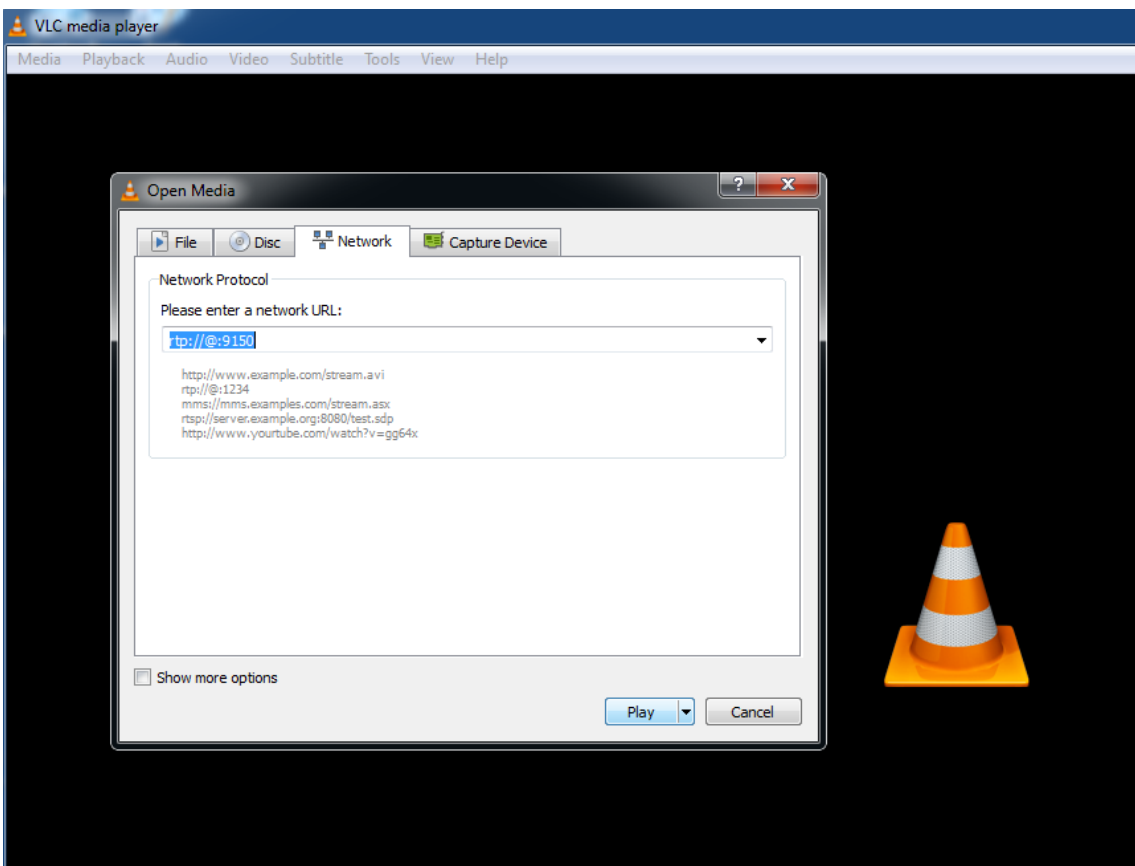
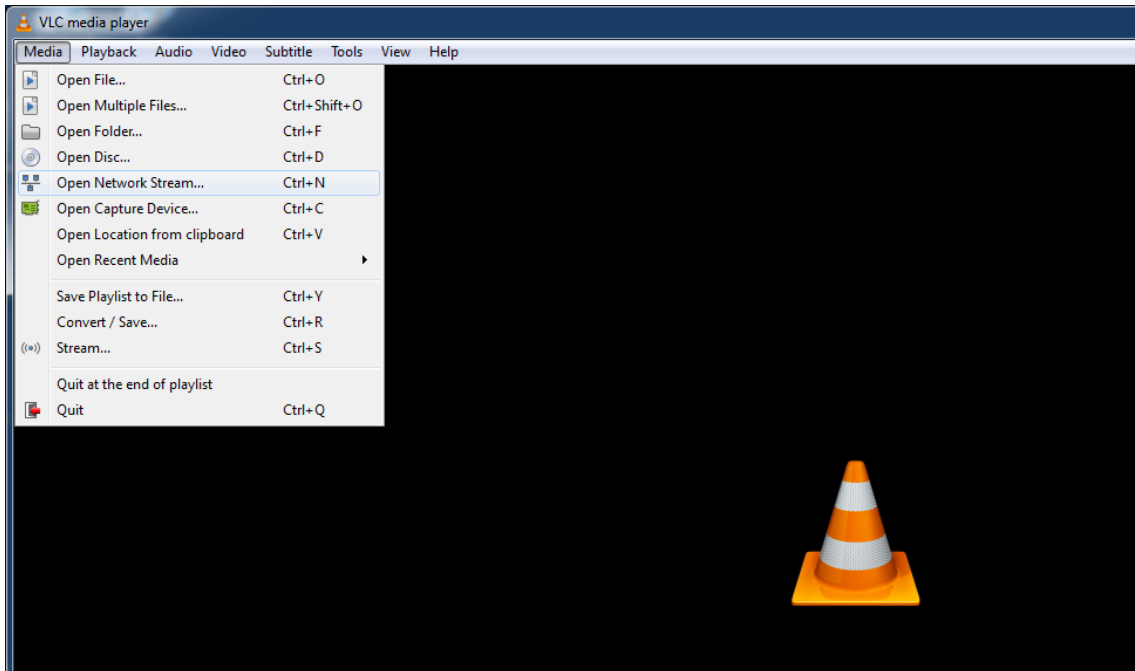
## 5 SOFTWARE DECODERS

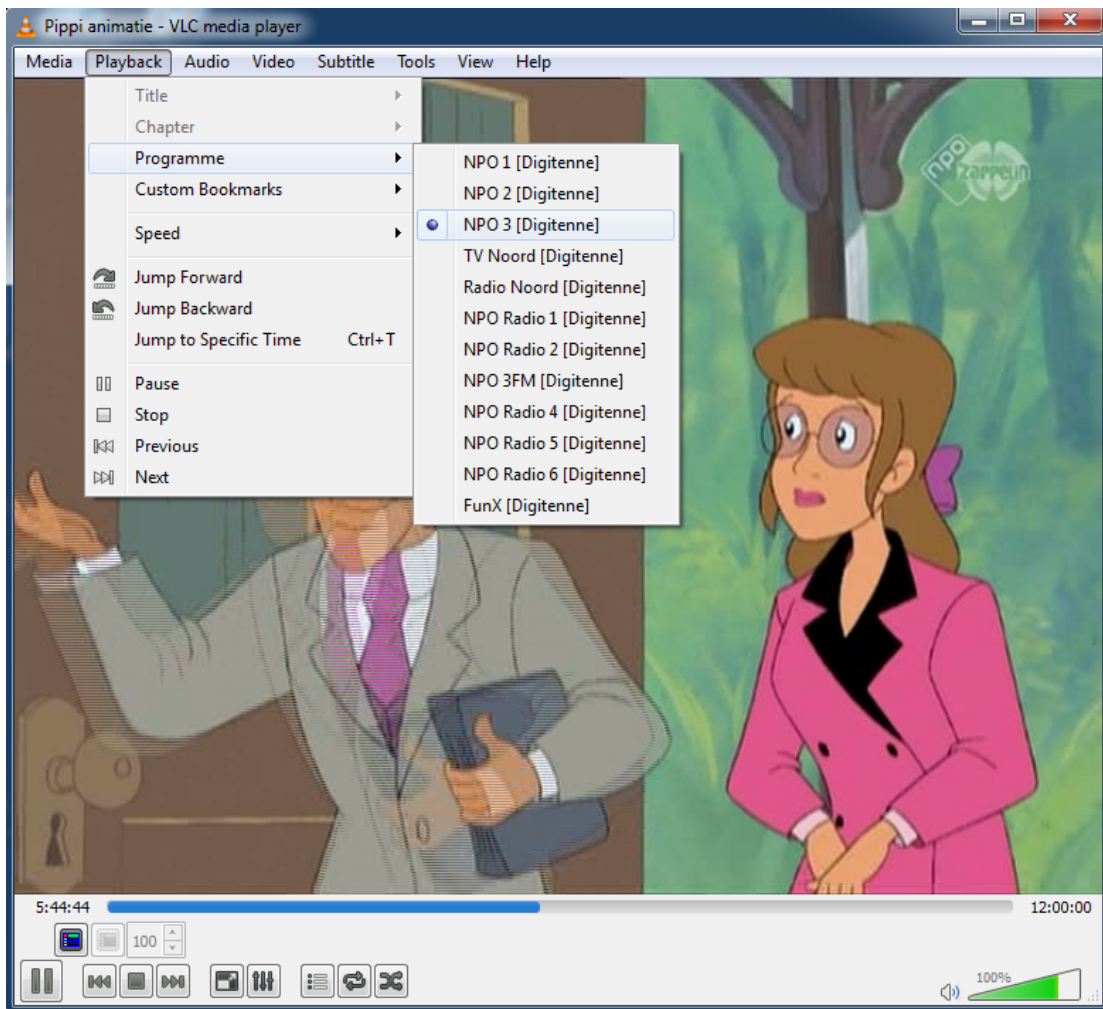
In order to view the programs any software decoder could be used.  
Most of them could be downloaded from the Internet FREE of charge.

One such software is the VideoLan. Use this like to download <http://www.videolan.org/>.

Once install on your system.

- From “Media” => Open Network Stream
- Type in “**rtp://@:9150**” for example ( if you are using RTP mode & the Port is 9150 )
- From “Playback”=> Click on “Programs” and select the desired program for the list to view.





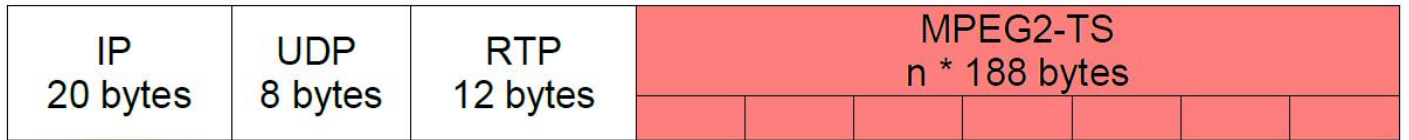
## Appedix1

DVB-IPI (ETSI TS 102 034) specifies protocols at the IP networking layer (IP Infrastructure) that must be supported on key system interfaces to deliver DVB services over IP networks.

Below are presented the main points on MPEG2 TS over IP Encapsulation set by DVB-IPI.

All MPEG-2 transport streams shall be encapsulated in RTP (Real-time Transport Protocol) according to RFC 1889 in conjunction with RFC 2250. Transport service is provided jointly by UDP (checksum and multiplexing) and RTP (sequencing and time stamping / jitter removing).

RTP always uses an even UDP port number.



40 bytes + n \* 188 bytes

Figure 1 : RTP packet structure

32 bits



- V - Version, 2 bits. This field identifies the version of RTP.
- P - Padding, 1 bit. If the padding bit is set, the packet contains one or more additional padding bytes.
- X - Extension, 1 bit. If set, the fixed header is followed by exactly one header extension.
- CC - CSRC count. The CSRC count contains the number of CSRC identifiers that follow the fixed header.
- M - Marker, 1 bit. The interpretation of the marker is defined by a profile.
- PT - Payload type, 7 bits. Identifies the format of the RTP payload and determines its interpretation by the application.
- Sequence number Sequence number, 16 bits. The sequence number increments by one for each RTP data packet sent and may be used by the receiver to detect packet loss and to restore packet sequence.
- Timestamp Timestamp, 32 bits. The timestamps reflects the sampling instant of the first byte in the RTP data packet.
- SSRC Synchronization source, 32 bits. Identifies the synchronization source.
- CSRC Contributing source, 0 to 15 items, 32 bits each. An array of 0 to 15
- CSRC elements identifying the contributing sources for the payload contained in this packet.

For most streams, the RTP/UDP/IP overhead of 40 bytes per RTP packet is relatively low (for example 3% with a 1 316 byte payload).

IP packets can carry from 1 to 7 TS packets, knowing that:

- overall size of RTP payload must not exceed the MTU (Maximum Transfer Unit) in order to prevent RTP packets fragmentation around the network,
- short packets cause a high overhead.

There is no requirement for every RTP packet in a stream to contain the same number of transport stream packets. The receiver should use the length field in the UDP header to determine the number of transport stream packets contained in each RTP packet. The time stamp field in RTP header is based on the PCR values from MPEG-2 with a resolution of 90 Khz.

Streams must include PAT (Program Association Table) & PMT (Program Map Table) – other tables are optional. SI (Service Information) is intended to be delivered via separate IP streams, in e.g. XML format. RTCP (Real-time Transport Control Protocol) can be included to periodically inform the sending side about network quality (e.g. lost packets, delay, jitter, etc.).

The fact is that, at the output of the IP network, delivered Transport Stream must be fully ISO/IEC 13818-1 compliant (40ms maximum jitter, 1 artifact every hour...).

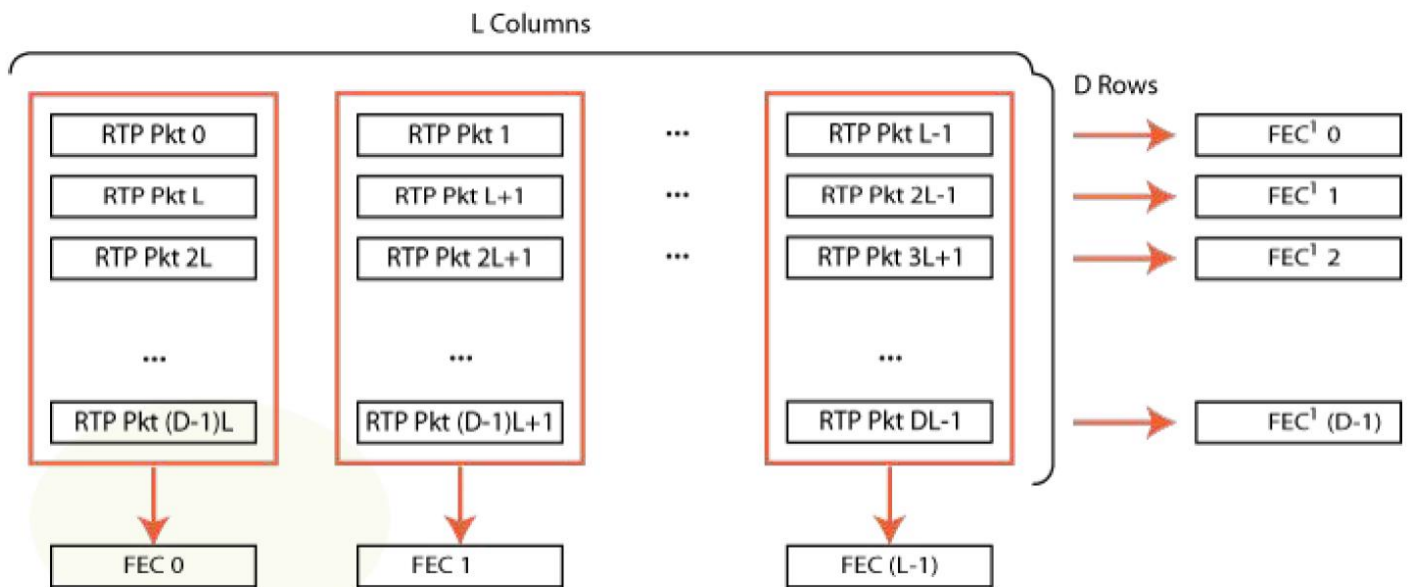
## Forward Error Correction

The Pro-MPEG Forum (association of broadcasters, program-makers, and vendors) approved an open standard to improve QoS in professional video over IP networks, while keeping interoperability between equipment manufacturers.

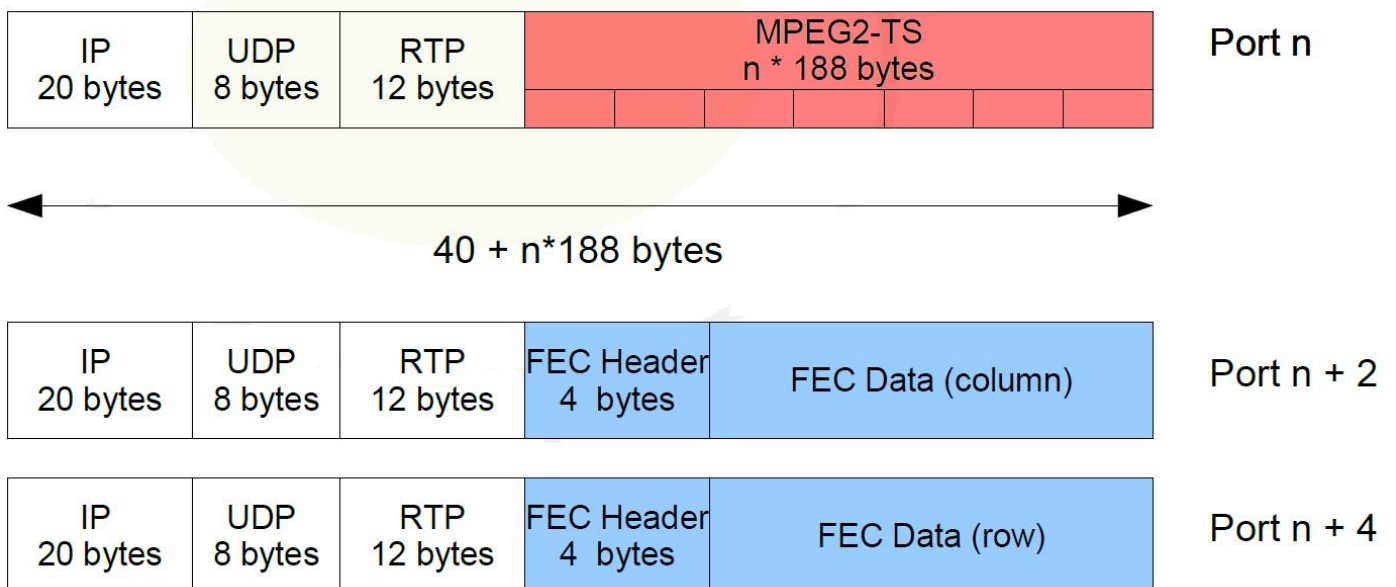
Standard is provided as a set of guidelines and recommendations (Codes of Practice).

Code of Practice #3 describes a Forward Error Correction (FEC) method for protection against errors in delivering professional MPEG-2 TS data over IP networks. This method implemented in IP adapters, packet errors, out of order packets, network jitter and delay can be compensated. Such process is done in real-time along with TS over IP encapsulation.

FEC protection data is calculated and embedded in regular RTP packets with a specific payload type, and relies on simple XOR arithmetic's (if  $F=A\oplus B\oplus C$ , then if only A,B,F are present, C can be recovered with  $C=A\oplus B\oplus F$ ). A FEC matrix is generated (cf figure 3) and transmitted on two separate UDP ports, FEC columns on UDP port + 2 and FEC rows on UDP port + 4.



The dual FEC mode structure



FEC packets transmission



Alitronika DVS continually strives to improve its products to keep up with ever increasing demands of the broadcasting industry.

Therefore Alitronika DVS reserves the right to make changes in its product specifications at any time without notice. The reader is cautioned to verify that the specification documents are current before placing orders.

Information furnished in this document is believed to be accurate and reliable.

However, Alitronika DVS assumes no responsibility for any errors that may appear in any of its documents. Furthermore, Alitronika DVS assumes no responsibility for the consequence of use of such information or for any infringement of patents or other rights of third parties that may result from its use. No license is granted by implication or otherwise under any patent or patent rights of Alitronika DVS.

This document supersedes and replaces all information previously supplied.

Alitronika DVS makes no warranty, representation or guarantee regarding the suitability of its products for any particular purpose, nor does Alitronika DVS assume any liability arising out of the application or use of any product and specifically disclaims any and all liability, including without limitation special, consequential or incidental damages. Conformity to standards, all operating parameters and compliance to regulations must be validated for each customer application by customer's technical experts.

Alitronika DVS products are not authorized for use as critical components in any systems such as life supporting systems.